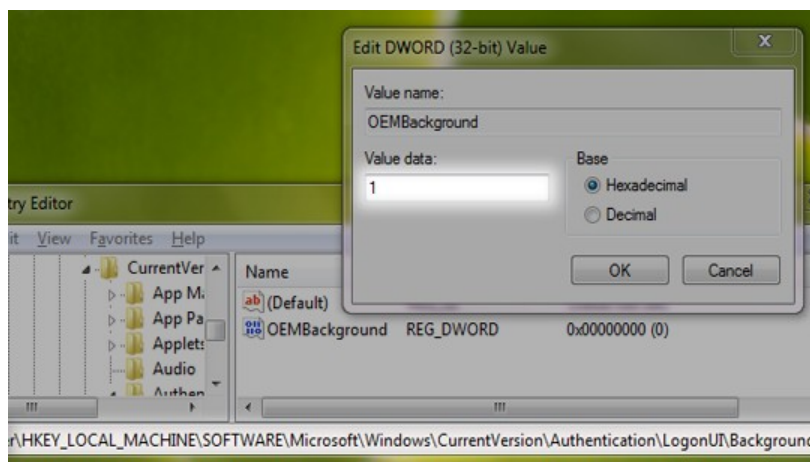


## Manually

It is always nice to know how things work behind the scenes, what better way to do so than try them out yourself. To change the logon screen manually follow these steps:

1. Fire up registry editor (Win Key + R and then type regedit, hit enter)
2. Browse to **HKLM\Software\Microsoft\Windows\CurrentVersion\Authentication\LogonUI\Background**, double click on key named **OEMBackground** and change its value to 1 (If you cannot find the path or the key go ahead and create it, remember **OEMBackground** is a Dword)

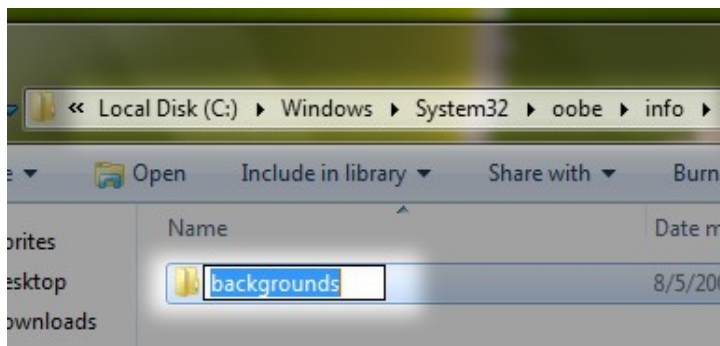


3. You just enabled the OEM Background functionality.

**NOTE :** If you can't do this alone, [just double click on “**Enable Logon In Windows 7**”] to install the ready created registry key file that contained to the folder.

**Now :**

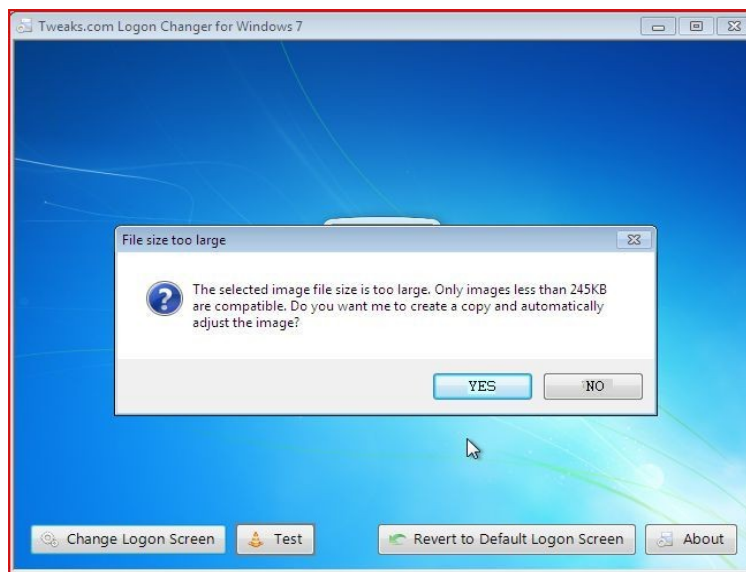
1. Now, head over to the following folder:  
C:\Windows\System32\oobe (“C” is your Windows Seven Installation drive)
2. Here, create a new folder named **info**. Again, create a new folder inside the info folder and rename it as **backgrounds**.



3. Copy your favorite image file to this folder and rename it as **backgroundDefault**.  
Note that the image must be in JPG format and the size should be less than 256 KB.
4. You are done. Reboot your system and see the change.

## Using Tools

The **Tweaks.com Logon Changer for Windows 7** provides an easy way to customize the logon screen background with just a few clicks. Simply, run it and click on **Change Logon Screen**.



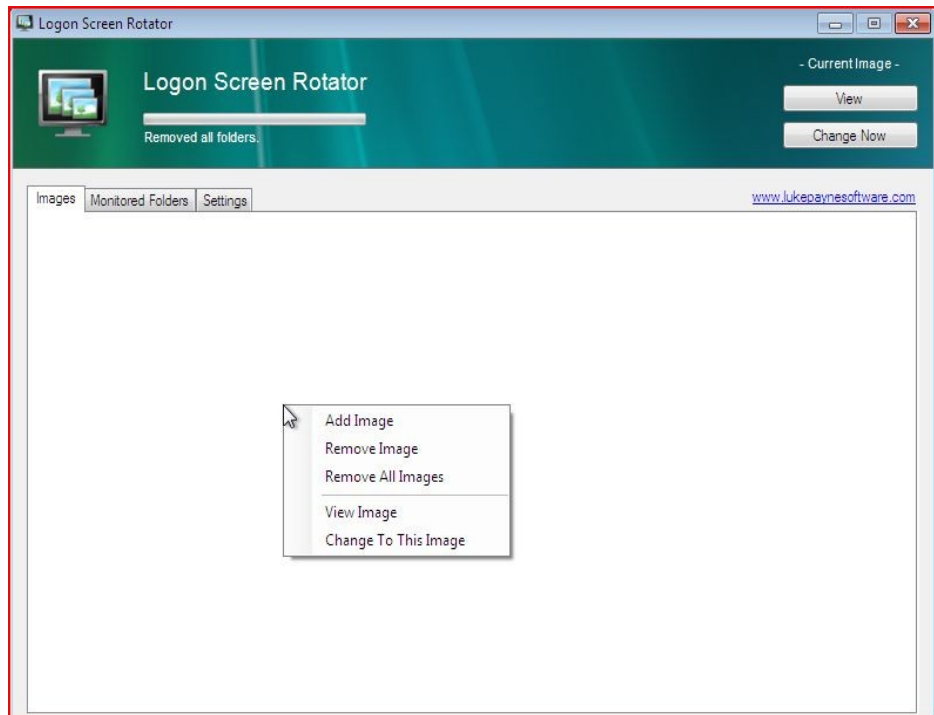
If the photo size that you selected it is no correct, the program will take to fix it for you !!

Click on **Test** button to see the result.

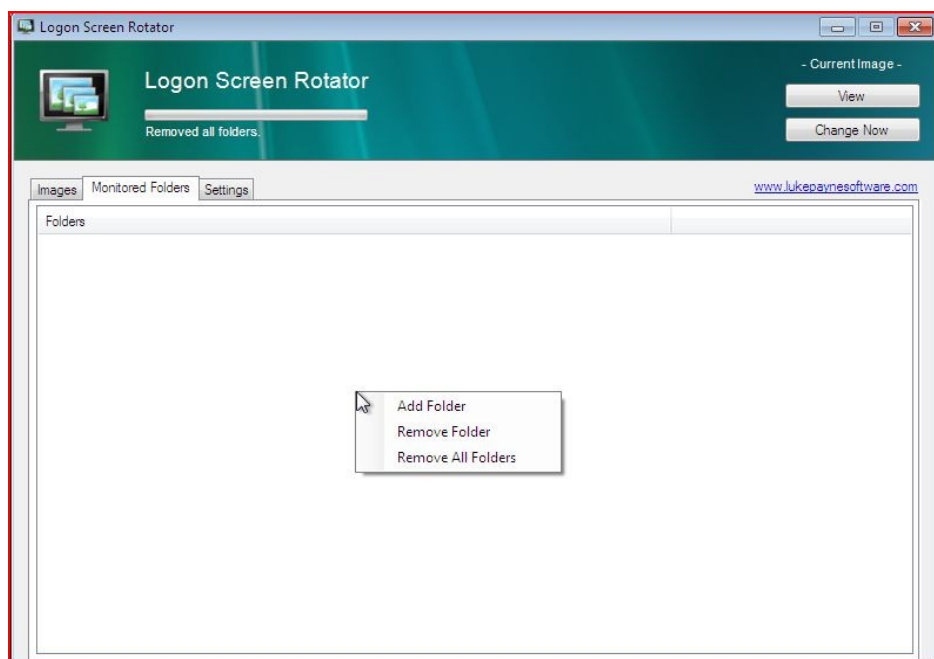
If you want to restore the default logon screen, just click on **Revert to default Logon Screen** button.

# Logon Screen Rotator

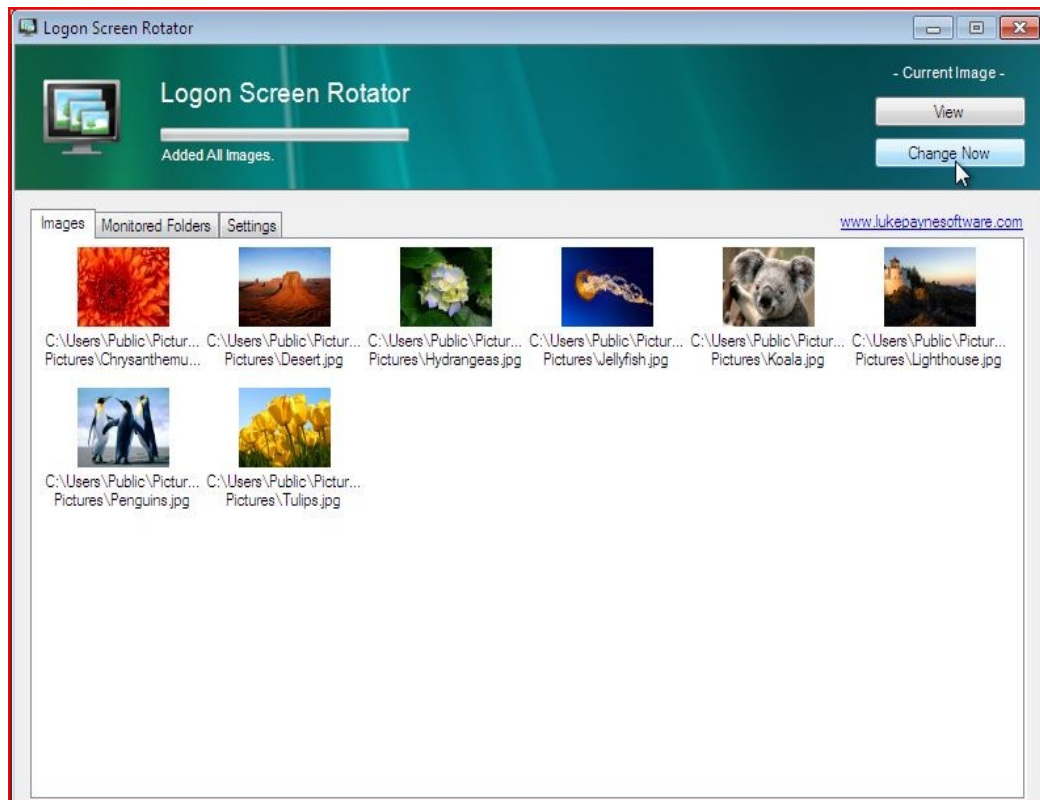
Here is an excellent tool for Windows 7 users which allows you to **choose up to 10 images and displays them randomly at each login.**



You can select the images using "**Add Image**" selection.

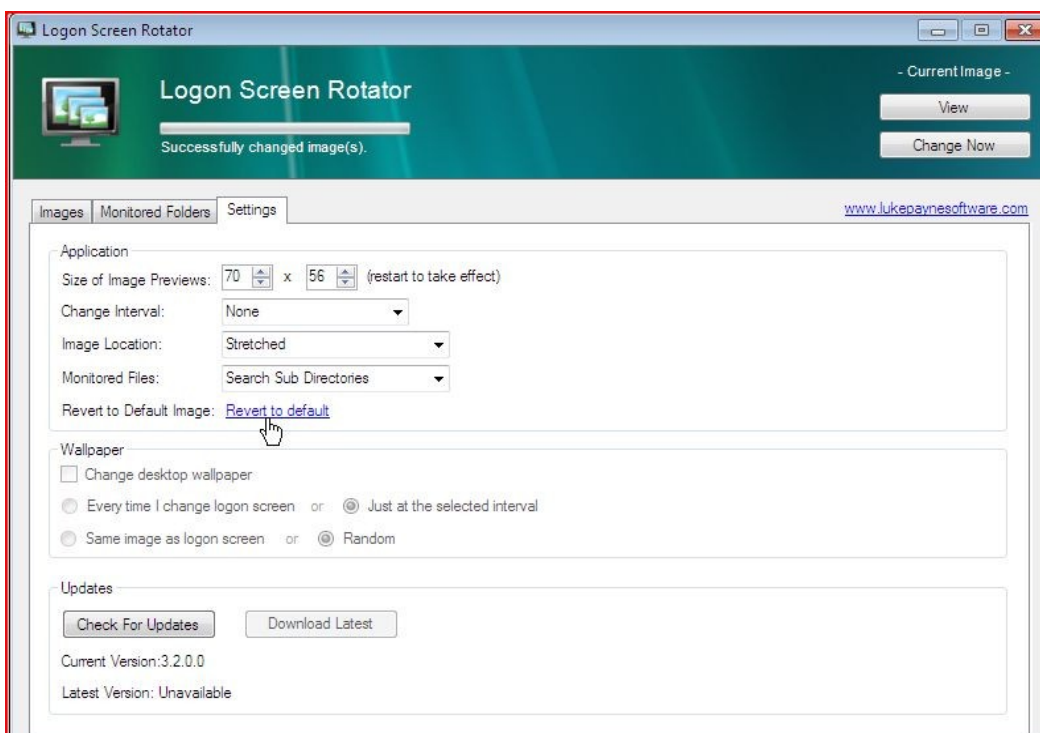


Or you can select to Add a folder by **Add Folder** selection



Once you select all images, click on "**Change Now**"

That's it. Now you can enjoy different login screens at each login.



If you want to restore the default login screen, go to settings and select **Revert to default**.